

We invite you to explore the Snoqualmie Valley Heritage Trail, one of Washington's most scenic and historically rich corridors. Stretching through forests, farmlands, and vibrant communities, the trail follows former railway routes and ancestral homelands of the Snoqualmie Tribe, connecting visitors with thousands of years of natural and cultural history.

# Snoqualmie Valley Heritage Trail

Discover the stories of the Snoqualmie Valley—from glaciers to railroads, and the people who shaped this land.

**sduk<sup>w</sup>albix<sup>w</sup>**

The name "Snoqualmie" is derived from the Lushootseed composed of a root, duk<sup>w</sup> referring to duk<sup>w</sup>ibəṭ, the Transformer and the suffix albix<sup>w</sup>, meaning "people of."



## 1 Duvall

### Heritage Sites

Dougherty Farmstead  
Cherry Valley Pioneer Cemetery  
Taylor's Landing  
Historic District  
Duvall Historic Depot

### Places to Eat

Amarillo Barbecue  
Corie's Cafe  
Culturas Bar & Grill  
Duvall Tavern  
Flavour Bistro

The Grange  
Grateful Bread  
Red Pepper Pizzeria  
William Grassie Wine Tasting  
Zeeks Pizza

## 2 Carnation

### Heritage Sites

Carnation Historic District  
Tolt Historical Museum  
Carnation Farms  
Nestle Museum  
Carnation Cemetery

### Places to Eat

Big Block Brewing  
Blake's Pizzeria  
Carnation Cafe  
Ixtapa  
Pete's Club Bar & Grill  
Red Pepper Pizzeria  
The Smoothie Shack

### Places to Stay

Tolt-MacDonald Park  
Campground



## 3 Fall City

### Heritage Sites

Historic Downtown District  
Historic Residential District  
Fall City Hop Shed

### Places to Eat

Aroma Coffee  
El Caporal  
Fall City Bar & Grill  
Moo! Ice Cream  
The Roadhouse  
Small Fry's

### Places to Stay

The Roadhouse  
Treehouse Point

## 4 Snoqualmie

### Heritage Sites

Historic Landmark District  
Snoqualmie Falls Visitor Center  
Northwest Railway Museum  
PSE Hydroelectric Museum

### Places to Eat

The Bindlestick  
The Black Dog  
Buckshot Honey  
Caadxi Oaxaca  
Copperstones  
Gianfranco Ristorante  
Indian Belly  
Salish Lodge & Spa  
Sigillo Cellars  
Snoqualmie Casino  
Snoqualmie Falls Brewery

### Places to Stay

Salish Lodge & Spa  
Snoqualmie Casino & Hotel  
Snoqualmie Inn



## 5 North Bend

### Heritage Sites

Snoqualmie Valley Museum  
Historic Landmark District  
Tollgate Farm  
USFS Ranger Station  
Historic Si View Park

### Places to Eat

Iron Duck  
North Bend Bakery  
North Bend Bar & Grill  
Il Paesano Ristorante  
Pour House Bar & Grill  
Rio Bravo  
Scott's Dairy Freeze  
Twede's Cafe  
Volition Brewing

### Places to Stay

Edgewick Inn  
North Bend Escapes  
North Bend Motel  
Sunset Motel

# Museums and Education Centers

### Dougherty Farmstead

26526 NE Cherry Valley Rd, Duvall  
duvallhistoricalsociety.org  
Sundays, 1 pm to 4 pm, May through September

### Northwest Railway Museum

38625 SE King St, Snoqualmie  
Open Daily, 10 am to 5 pm  
TrainMuseum.org

### PSE Hydroelectric Museum

SE 69th Place, Snoqualmie  
Wednesday to Sunday, 10 am to 5 pm,  
Memorial Day through Labor Day

### Tolt Historical Museum

31523 NE 40th St, Carnation  
tolthistoricalsociety.org  
Saturdays, 11 am to 3 pm, April through October

### Snoqualmie Valley Museum

320 Bendigo Blvd S, North Bend  
Open Thursday to Tuesday, 10am to 5pm  
Closed Wednesdays  
SnoqualmieValleyMuseum.org

### Cedar River Watershed Education Center

17905 Cedar Falls Rd SE, North Bend  
Thursday & Friday: 12 noon to 4 pm  
Saturday: 10 am to 4 pm

### Snoqualmie Falls sduk<sup>w</sup> albix<sup>w</sup> Gift Shop & Visitor Center

6501 Railroad Ave SE, Snoqualmie  
salishlodge.com/area/snoqualmie-falls-gift-shop-and-visitor-center  
Open Daily, 9 am to 5 pm

SCAN ME



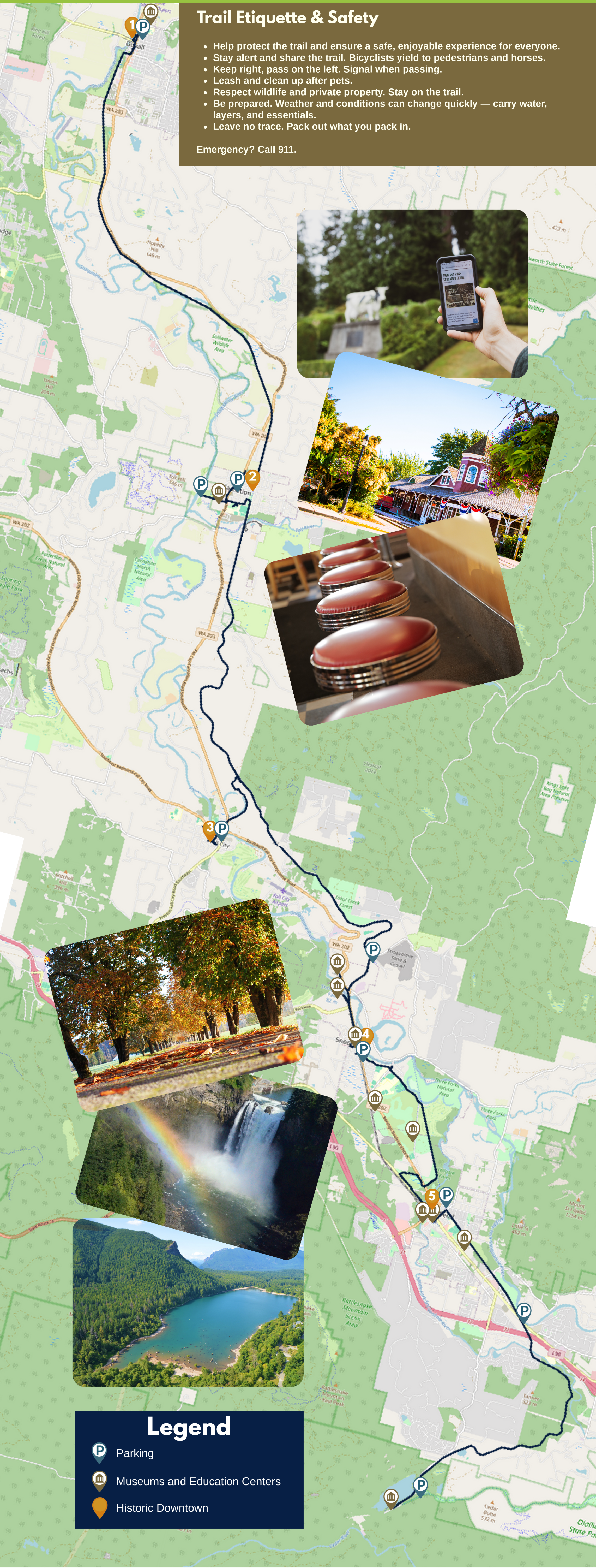
The Snoqualmie Valley Heritage Trail — a collaboration celebrating the region's past, present, and future. Learn more at [SnoqualmieValleyMuseum.org/heritagetrail](http://SnoqualmieValleyMuseum.org/heritagetrail)

# Snoqualmie Valley Heritage Trail

## Trail Etiquette & Safety

- Help protect the trail and ensure a safe, enjoyable experience for everyone.
- Stay alert and share the trail. Bicyclists yield to pedestrians and horses.
- Keep right, pass on the left. Signal when passing.
- Leash and clean up after pets.
- Respect wildlife and private property. Stay on the trail.
- Be prepared. Weather and conditions can change quickly — carry water, layers, and essentials.
- Leave no trace. Pack out what you pack in.

Emergency? Call 911.



## Legend

- Parking
- Museums and Education Centers
- Historic Downtown